

# THE GRID

P.O. Box 709  
(104 Dewitt Ave., East)  
Mattoon, Illinois 61938

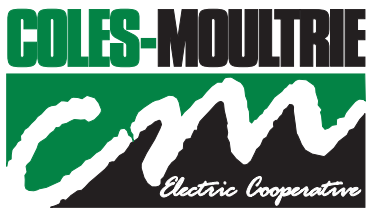
Phone: 217-235-0341  
or Toll-Free:  
1-888-661-CMEC (2632)  
Office hours:  
Monday-Friday  
7:30a.m. - 4:30p.m.

- Chairman**  
Kent Metzger .....Gays
- Vice Chairman**  
Bill Voyles ..... Sullivan
- Secretary**  
Andrew Fearn ....Charleston
- Treasurer**  
Thomas Sherman ...Humboldt
- Directors**  
Jeffery Hudson .....Charleston  
Mike Love ..... Mattoon  
Colt Roderick ..... Trilla
- President/CEO**  
Amy Borntager

To Report an Outage  
call #888-661-2632

## Find Your Name and Win \$50

Find your name hidden inside this issue of The Grid and receive a **\$50 bill credit**. Credit must be claimed by the end of each month in which this newsletter is published.



Your Touchstone Energy® Cooperative 

## Honoring the Best in the Trade

CMEC Lineman John Pickowitz was recognized as one of six across the nation to be selected as members of the Class of 2023 All American Lineworkers.



## 2023 Farm Progress Show

Stop and see us at this year's 70th Farm Progress Show on Aug. 29-31 at 4275 E. Mound Road in Decatur. We will be in the Touchstone Energy Cooperatives tent located on Second Progress Street.

# SAVE THE DATE

OCTOBER

6

## MEMBER CELEBRATION

Join us Friday, Oct. 6,  
at Peterson Park in  
Mattoon for our  
Member Celebration  
& Annual Meeting.



## Youth Ag & Outdoor Safety Day

CMEC participated in this biannual event at Coles County Fairgrounds, sponsored by American Prairie Insurance Solutions. *Larry Ashmore*

## REMINDERS

- The 2,000th member to sign up for Paperless Billing will receive a \$100 bill credit!
- Bills are due the 6th of each month.
- Visit [safeelectricity.org](http://safeelectricity.org) for lifesaving information and electrical safety materials.



## Pole Top Rescue

CMEC lineworkers gathered in May to participate in our annual pole top rescue exercise with the help of the Association of Illinois Electric Cooperatives (AIEC). This is required each year as part of our safety training and allows us to simulate procedures in case of an emergency or injury. *(Photo by Melissa Harden)*

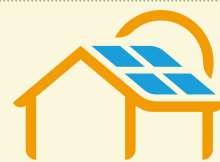
## Congratulations to our 2023 CMEC Scholarship Recipients



*Pictured (back row, left to right): Lindsey Beals, Trilla; Tyson Gass, Humboldt; and Rease Daniels, Mattoon. Front row, left to right: Delaney Goddard, Charleston; Mariah Apke, Toledo; Noelle Stodden, Trilla; and Ashley Seegmiller, Arthur. Not pictured: Alexander Shumway, Mattoon (Photo by Melissa Harden)*



**Thanks** to all who came out to donate blood at The Fields Church with us!



## Renewables

Our co-op currently has 88 members utilizing solar power. If you are considering renewable energy, contact us first to help get you started and work with you throughout this process.

## Tyson Gass awarded the Randall Beasley Memorial Scholarship



*Pictured left to right Sue Meyer, daughter of long-time CMEC employee Randall Beasley, Tyson Gass and Brandy Gass (Photo by Melissa Harden)*

*Coffee*  
on the Co-op



Join us for  
**coffee & conversation**

Wednesday, Aug. 30  
7-8:30 a.m.

Sweet Vail Café in Sullivan

Stay tuned for next month's location!

All members are welcome!



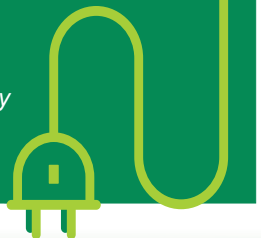
# Energy Efficiency

## Tip of the Month

Did you know ceiling fans can make a room feel 4 degrees cooler? To save energy through ceiling fan use, remember to raise your thermostat a few degrees while fans are turned on. Ceiling fans can help improve comfort year-round. In the summer, operate ceiling fans in a counterclockwise direction. Reverse the direction to clockwise during winter months and set fans on a low speed so warm air can circulate from the ceiling to the lower levels of the room.

Remember, ceiling fans cool people, not spaces. Be sure to turn them off when you leave the room.

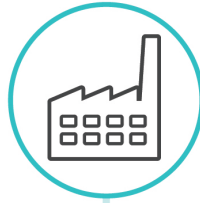
Source:  
Dept. of Energy



# 4 KEY FACTORS

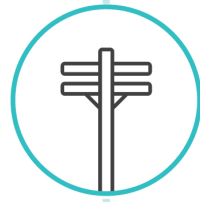
## That Impact Energy Bills

You pay for the electricity you consume each month, but there are additional factors that impact your energy bills.



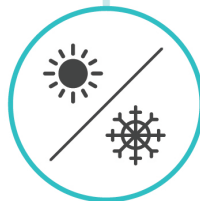
### Fuel Costs

Before electricity can be delivered to your home, it must first be generated at a power plant or from a renewable source. The cost of fuels used to generate electricity fluctuates, which is why you see a power or fuel charge on your monthly bill. This monthly charge covers cost fluctuations without having to continually restructure electricity rates.



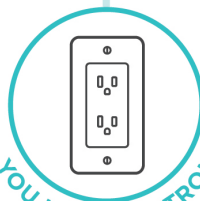
### Service Costs

Your bill includes a monthly service charge, which recovers part of the co-op's ongoing investments in poles, wire, meters, system maintenance and additional costs necessary to provide electric service.



### Weather

When temperatures soar or dip, your cooling or heating equipment must run longer and at maximum capacity, which can greatly increase your energy use. Extreme temperatures can also affect electricity market prices. When the need for electricity increases due to extreme heat or cold, the price of power typically rises.



### Energy Consumption

This is the amount of electricity you use each month to power your home's cooling/heating system, appliances, lighting, electronics and more. The amount of electricity you consume is measured in kilowatt-hours, or kWh. You have control over how much energy you use, which can ultimately help manage your monthly costs.

YOU HAVE CONTROL

Monthly Board Meeting Minutes can be viewed on our website: [cmec.coop](http://cmec.coop)