

THE GRID

P.O. Box 709
(104 Dewitt Ave., East)
Mattoon, Illinois 61938

Phone: 217-235-0341
or Toll-Free:
1-888-661-CMEC (2632)
Office hours:
Monday-Friday
7:30a.m. - 4:30p.m.

Chairman

Kent MetzgerGays

Vice Chairman

Bill VoylesSullivan

Secretary

Andrew FearnCharleston

Treasurer

Thomas Sherman ...Humboldt

Directors

Jeffery HudsonCharleston
Mike Love Mattoon
Colt Roderick Trilla

President/CEO

Amy Borntager

**To Report an Outage
call #888-661-2632**

**Find Your Name
and Win \$50**

Find your name hidden inside this issue of The Grid and receive a **\$50 bill credit**. Credit must be claimed by the end of each month in which this newsletter is published.



Your Touchstone Energy® Cooperative 



Member Celebration

Mark your calendar and celebrate with us on Friday, Oct. 6th, starting at 10 a.m. at Peterson Park. Members may enter the park using the southwest entrance on Broadway Avenue near 5th Street. Employees will be on hand to guide and direct you. Stay for our Annual Meeting at 1 p.m. in the DeMars Center, listen live on Facebook, or tune in on your radio to Victory 103.9. (See page 6 of this magazine.)



- Early bird registration available at **6:30 a.m. at the park**
- \$100, \$250 and \$500 bill credit drawings (**need not be present to win**)
- Boxed lunch from Niemerg's starting at **11 a.m. while supplies last**
- Bucket truck rides, Big Al's shakeups and giveaways
- \$25 bill credit for registered members



**Office closed
Monday, Sept. 4,
in observance
of Labor Day.**



Coffee & Conversation

Thank you to our members who took the time to have coffee with us, and thank you to these wonderful local spots for hosting our summer Coffee on the Co-op events: **Downtown Diner, Jackson Avenue Coffee, Casey Coffee Company, The Depot and Sweet Vail Café.** We enjoyed meeting members and supporting small businesses in our communities. They offer great java, meeting spaces, remote work options and delicious food and desserts.



June 2023 Storm

A storm called a derecho, which is a system that can remain active for many hours or multiple days, passed through central Illinois on Thursday, June 29, bringing straight-line winds and several tornados. Most of our co-op substations were affected, resulting in outages impacting our entire service area. Some folks were out as long as 72 hours as our crews worked diligently to clean up debris, repair broken poles and untangle lines in downed trees. Crews from two Illinois co-ops, Eastern Illini Electric Cooperative, Paxton, and Wayne-White Counties Cooperative, Fairfield, helped with restoration. CMEC thanks our members, employees and communities for their patience and support.





Congrats!

David Shain
Promoted to
Journeyman Lineman



**52nd Broomcorn
Festival
Sept. 8-10**

Come to Arcola for the 52nd Annual Broomcorn Festival! Check out broom-making demos, great food, craft vendors and family-friendly free entertainment. Be on the lookout for the CMEC bucket truck in their huge parade on Saturday, Sept. 9, at 3 p.m. Go to www.arcolachamber.com for all the info!

Capital Credits

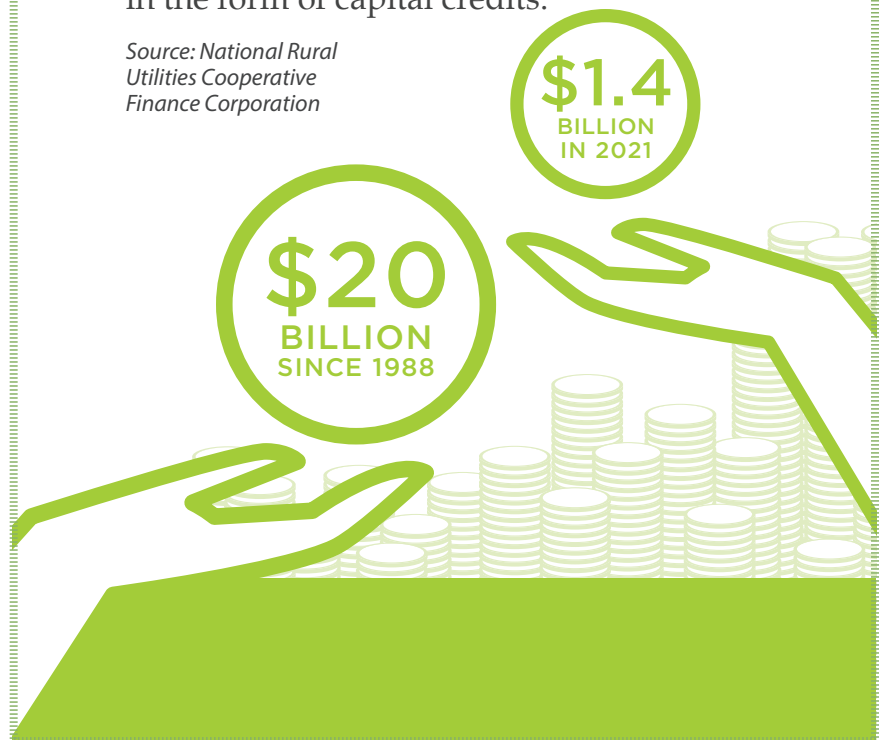
2022 allocations to members were printed on the bills mailed out in mid-August. This is one way we inform you of your share of the total capital credits or margins earned for the previous year. CMEC has calculated each member's share of the total margins and has credited that amount to your capital credit account. It cannot be claimed or credited toward your electric bill. The board of directors reviews the financial condition of the cooperative before determining when and how much capital credit can be returned to members. You must be a member and have service in your name to have capital credits assigned to you. If you move off our lines, please provide us with your new address so we can mail any future capital credit checks.

Did You Know?

Electric cooperatives have retired \$20 billion to members since 1988 – \$1.4 billion in 2021 alone.

Because electric co-ops operate at cost, any excess revenues (called margins) are allocated and retired to members in the form of capital credits.

*Source: National Rural
Utilities Cooperative
Finance Corporation*



Firing Up One Portable Generator

Firing up one fuel-powered portable generator produces as much carbon monoxide (CO) as hundreds of combustion-engine cars, according to the Consumer Product Safety Commission.

Using a portable generator in a home, garage or too close to an enclosed area is like starting a parking lot full of cars and letting the CO poison seep into that area. The devastating result is almost immediate: The CO from one generator can kill in minutes.

CO facts

CO is colorless and odorless. Poisoning can happen so quickly that exposed persons may become unconscious before recognizing any symptoms.

Each year in the U.S.:

- Approximately 85 individuals die from CO poisoning.
- Most deaths (81%) occur in residential locations.

Safety tips

To use a portable generator safely:

- Always use a portable generator at least 20 feet away from your home.
- Never operate one inside a home, on a porch or near windows and doors.
- Apply the 20-foot distance rule to other locations, such as a shed, cabin, camper or trailer.
- When shopping for a generator, look for one that gives off reduced emissions.
- Also look for one that shuts off automatically when high levels of CO are present.
- Keep your generator well-maintained and follow all manufacturer's instructions.

- Operate it under an open, canopy-like structure on a dry surface where water cannot pool underneath.
- Ensure CO detectors are installed on every level of your home and near or in bedrooms. **William Tapella**
- Test CO alarms monthly; also track their age. They need to be replaced every seven years.



A portable generator is usually gas-powered and movable. A generator should have more output than the wattage of the electronics plugged into it. This way, the generator will be able to create the extra electricity it takes for the initial power surge. Make sure there is nothing plugged into the generator when turning it on.

Besides portable generators, there are also standby generators. The standby versions are attached directly to the house and are typically powered by natural gas or propane. These generators start automatically when the power goes out.

To prevent feeding power back into the power grid and endangering electric line crews and others, standby generators should have a transfer safety switch installed by a professional. Never plug a portable generator directly into a home outlet or electrical system for the same reason.

For more electrical safety information, visit SafeElectricity.org.

Energy Efficiency Tip of the Month

Did you know fall is the perfect time to schedule a tune-up for your heating system? Home heating accounts for a large portion of winter energy bills, and no matter what kind of system you have, you can save energy and money by regularly maintaining your equipment.

Combining proper equipment maintenance and upgrades with recommended insulation, air sealing and thermostat settings can save about 30% on your energy bills.

Source: Dept. of Energy



Monthly Board Meeting Minutes can be viewed on our website: cmec.coop